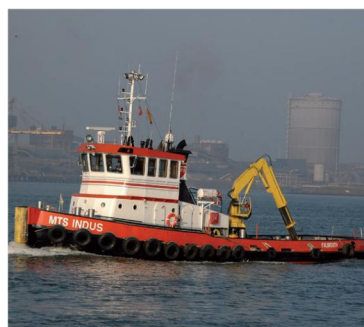
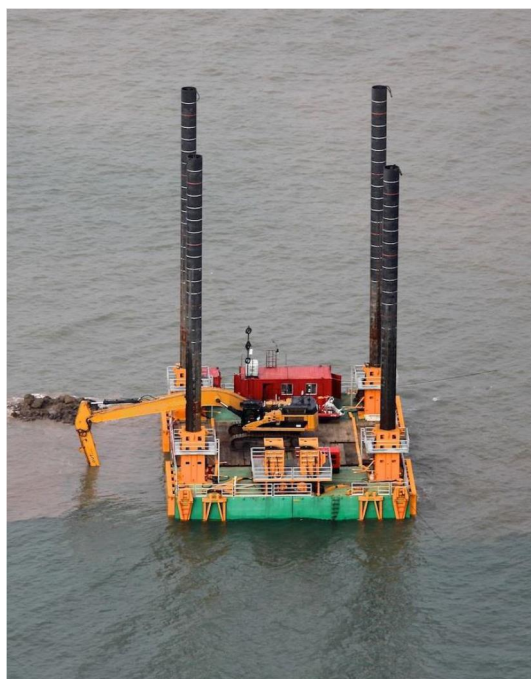




DUCHY of CORNWALL
HARBOUR OFFICE ST MARY'S ISLES OF SCILLY TR21 0HU
Telephone: (01720) 422768 Email hm@stmarys-harbour.co.uk
Harbour Master: Dale Clark

LNTM No. 09/15
ST. MARY'S HARBOUR
LOCAL NOTICES TO MARINERS
DELIVERY OF JACK UP BARGE

Valid from: 15th February 2015
Valid until: n/a



Mariners are advised that over the high water on Sunday 15th February St Mary's Harbour are expecting delivery of the 30m x 18m jack up barge 'Sea Horse'. The barge will be brought to St Mary's Roads by tug 'MTS Indus' and then transferred to the smaller tug 'MTS Vulcan'. On completion of the transfer the 'Sea Horse' will be taken to the inner berth within the harbour. It is expected that this operation will take place during the period 1hr before/1hr after high water 13:44 4.6m

During this period space within the harbour will be heavily restricted and as such there will be no traffic movements within the harbour during this time (expected 40 minutes duration). All communication will be carried out on harbour channel, VHF Ch.14

LNTM currently in force
01/15, 05/15, 06/15, 07/15, 08/15

All LNTMs are available online at www.stmarys-harbour.co.uk

Dale Clark
Harbour Master
St. Mary's Harbour
Isles of Scilly