



DUCHY of CORNWALL
HARBOUR OFFICE ST MARY'S ISLES OF SCILLY TR21 0HU
Telephone: (01720) 422768 Email hm@stmarys-harbour.co.uk
Harbour Master: Dale Clark

LNtM No. 20/15

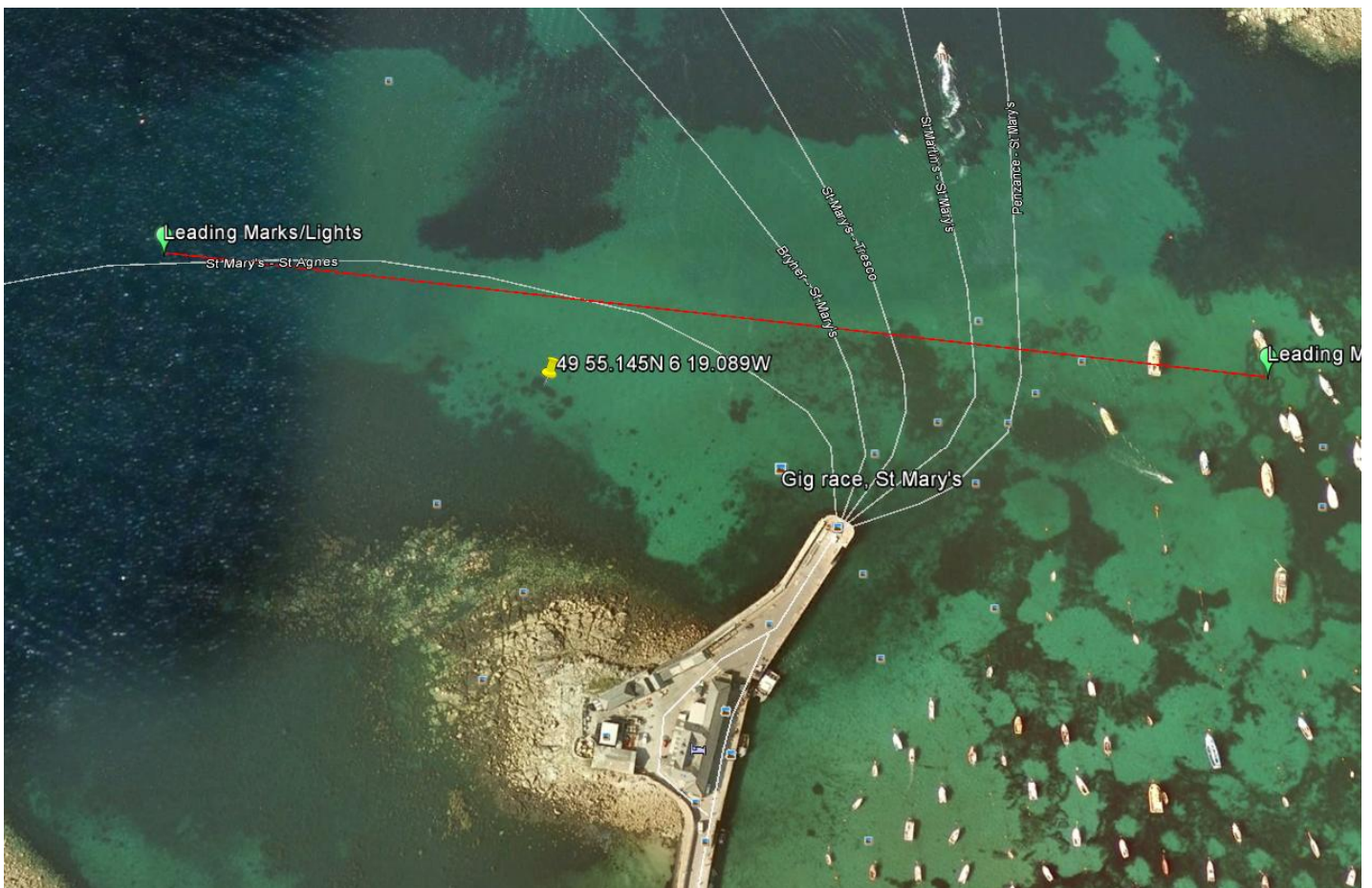
ST. MARY'S HARBOUR
LOCAL NOTICES TO MARINERS

Valid from: 21st April 2015

Mariners are advised that a temporary large mooring has been placed in the following position off the back of St Mary's quay.

49°55.145N 006°19.089W

The mooring is marked with a large yellow buoy and at present is unlit.



LNtM In force:
01/15 5/15 6/15 8/15 13/15 14/15 15/15

Dale Clark
Harbour Master
St. Mary's Harbour

All LNtMs are available online at www.stmarys-harbour.co.uk