



DUCHY *of* CORNWALL
HARBOUR OFFICE ST MARY'S ISLES OF SCILLY TR21 0HU
Telephone: (01720) 422768 Email hm@stmarys-harbour.co.uk
Harbour Master: Dale Clark

LNtM No. 22/15

ST. MARY'S HARBOUR
LOCAL NOTICES TO MARINERS

Valid from: 17th May 2015

Mariners are advised of major works to extend the end of St Mary's quay over the coming months. All vessels are requested to keep clear of the area shown on the accompanying diagram, associated vessels and the moorings described below. When passing the areas described vessels are requested to do so at slow speed.

A North Cardinal marks the northernmost extremity of the work site and all vessels are requested to monitor VHF Ch. 14 when operating in the harbour or within the approaches.

LNtM Cancellations

This LNtM amalgamates several previous Notices. With this in mind please cancel LNtM:
05/15,06/15,08/15,13/15,14/15,15/15,20/15,21/15

General

The diagram shows the positions of the plant used in the next stage of construction which will see 74 blocks laid to make up the main structure of the extension. The blocks are 15m wide and can weigh up to 65t.

Diving

The quay works involves significant diving operations and mariners are requested to be mindful of their wash when passing or approaching the site. Diving operations will be marked with alpha flags on both the existing quay end and on-board the jack-up rig.

Safety Boat

During operations the harbour vessel 'Minke 2' will act as a safety boat in the vicinity. Operators will be contactable on VHF Ch.14 call sign "Safety Boat".

Moorings

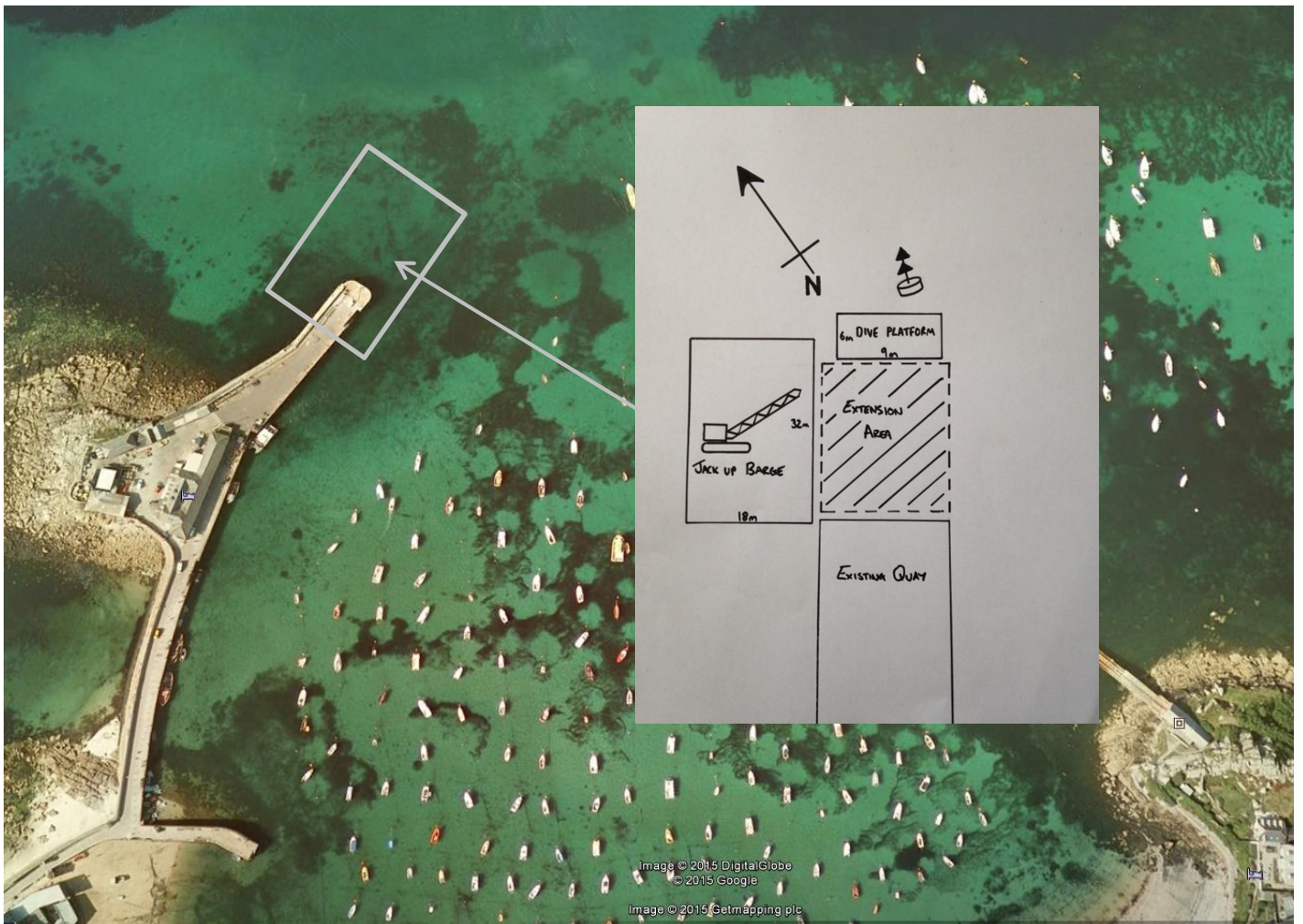
As part of the project various heavy moorings have been installed around the islands as follows:

- SSW of Nut Rock 49°55.67N 006°20.34W
- SSW of Nut Rock 49°55.73N 006°20.28W
- Innisidgen 49°56.32N 006°17.50W
- Rat Island 49°55.15N 006°19.09W

Vessels

Several vessels are involved in the project and will be based within the Islands for long periods. These vessels may be found upon one of the aforementioned moorings but may also be utilising any of the anchorage positions around the Islands. Vessels should be mindful of their possible presence during restricted visibility. They are (but not restricted to):

- MTS Indus (Tug)
- MTS Vulcan 2 (Tug)
- Arromanches (Landing Craft)
- Polmear (Tug)
- JML 35 (Barge)
- Stemat 85 (Barge)
- C7 (Jack Up Barge)
- Diving Pontoon
- Minke 2 (Safety Boat)



**LNtM In force:
01/15**

Dale Clark
Harbour Master
St. Mary's Harbour

All LNtMs are available online at www.stmarys-harbour.co.uk