



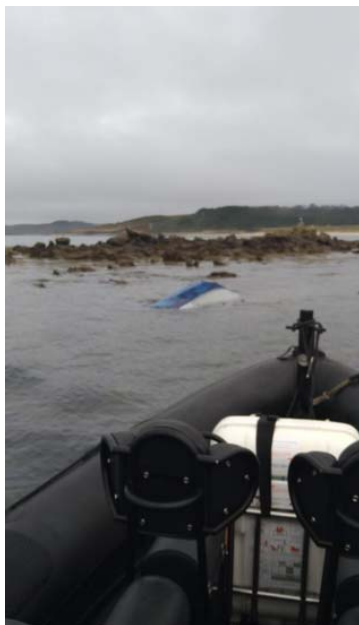
DUCHY *of* CORNWALL  
HARBOUR OFFICE ST MARY'S ISLES OF SCILLY TR21 0HU  
Telephone: (01720) 422768 Email [hm@stmarys-harbour.co.uk](mailto:hm@stmarys-harbour.co.uk)  
Harbour Master: Dale Clark

## **ST. MARY'S HARBOUR** **LOCAL NOTICES TO MARINERS**

**LNTM No. 22/21**

### **Sunken Vessel**

Mariners are advised that a small vessel has sunk after hitting rocks in the vicinity of position **49 56.315'N 006 20.163'W** just South of Long Crow which is an area transited by local traffic over the HW periods. Mariners are advised to give this area a wide .



**LNTM in force: 10.21**

All LNTMs are available online at [www.stmarys-harbour.co.uk](http://www.stmarys-harbour.co.uk)

Dale Clark  
Harbour Master  
St. Mary's Harbour  
Isles of Scilly