



DUCHY of CORNWALL
HARBOUR OFFICE ST MARY'S ISLES OF SCILLY TR21 0HU
Telephone: (01720) 422768 Email hm@stmarys-harbour.co.uk

Harbour Master: Dale Clark

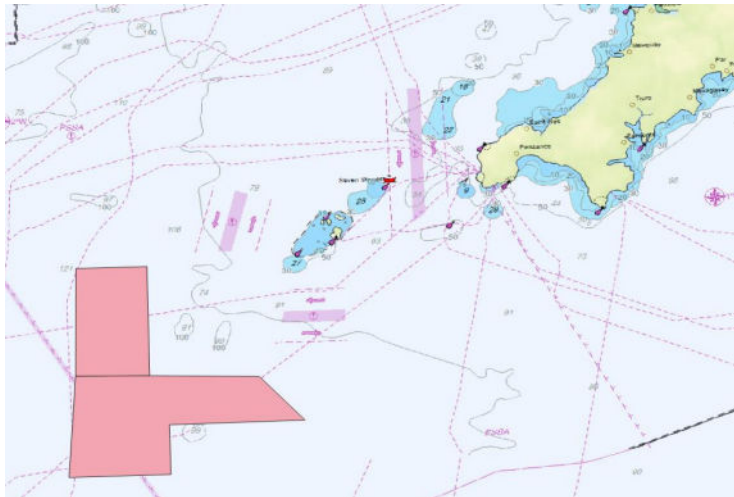
LNtM No. 16/23

ST. MARY'S HARBOUR
LOCAL NOTICES TO MARINERS

Valid From 27.09.23

UNCREWED SURFACE VESSELS (USV)

Mariners are advised that Uncrewed Surface Vessels (USVs) will be operating from St. Mary's Harbour over the coming 6 months to undertake survey work 30' – 60' South West of the Isles of Scilly – see diagram below. Mariners are requested to give a wide berth and be aware of the operational areas.



There may be up to 4 USVs in operation at any one time and each is piloted remotely 24hrs a day. Each USV is 4.5m long, 2.2m wide and will travel at approximately 3.5kts. When the USVs are being launched they will be escorted by a support vessel which will operate from the harbour to the Spencer's Ledge buoy and vice versa for recovery. Each USV is fitted with AIS, navigational lights and sound signals, active radar reflector and the superstructure painted yellow (see above image).

In case of emergencies please contact the following

- | | | |
|-------------------|----------------------|--|
| • USV Supervisor | +353 (0) 1 223 9950 | usv.supervisor@xocean.com |
| • Fergus Bradford | +44 (0) 2080 982 104 | fergus.bradford@xocean.com |
| • Tom Davenport | +44 (0) 2080 982 102 | tom.davenport@xocean.com |
| • Anthony O'Toole | +353 (0) 86 159 2563 | anthonyotoole@xocean.com |
| • Oliver Harris | +44 (0) 2080 982 108 | oliver.harris@xocean.com |

LNtMs in force: 01/23, 07/23, 11/23

All LNtMs are available online at www.stmarys-harbour.co.uk

Dale Clark

Harbour Master

St. Mary's Harbour

Isles of Scilly